

Quick reference card •

For BVS series

Bladder Volume Scanners



Turn on the BVS by pressing the power button •

Press the powerbutton 4 seconds.
If the device is in sleepmode press also the button. The instrument turns on.



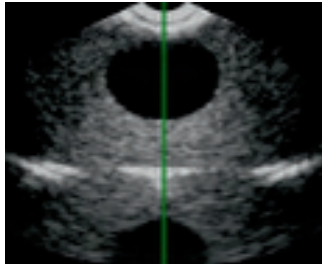
Patient •

Have the patient lie in the supine with abdominal muscles relaxed.



Use sufficient amount of gel •

Place an ample amount of gel on the probe head or on the midline of the patients abdomen approximately 1 inch (2-3 CM) above the symphysis pubis (pubic bone). Place the instrument on the patient's abdomen, and aim the instrument slightly (15° ~ 30°) downward the patient's coccyx (tail bone).



Press and release the scan button •

Locate the bladder with the Pre-Scan Function.

- Aim the probe head towards the bladder
- Provide some pressure (probe – skin) to ensure contact
- The green line must be in the middle of the result screen
- Hold the probe steady until the scan is finished

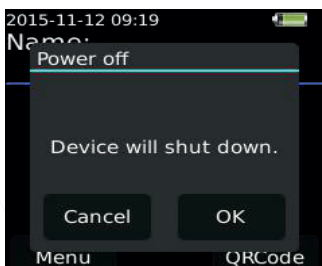
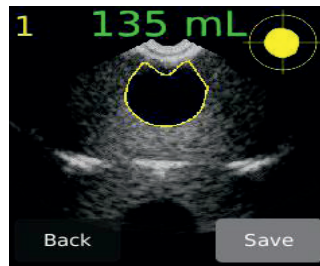


Press the scan button again to start the actual scanning function •

Hold the probe head steady for 4 seconds while scanning. If the scan is successful, the bladder appears in the center of the crosshairs on the console.

Evaluate the scan results and save the scan •

- Browse the images by sliding on the images
- Store image by clicking the save button
- 3 measurements per patient can be stored



Shut down the instrument •

- Press the power button for 2 seconds and press OK.
- Automatically sleepmode after 5 minutes
- Automatically shut down after 8 minutes